



MONTHLY MEMBERSHIP PROGRESS REPORT

District 11 E1

Results as of: 5/31/2016

GMT: THOMAS MATNEY

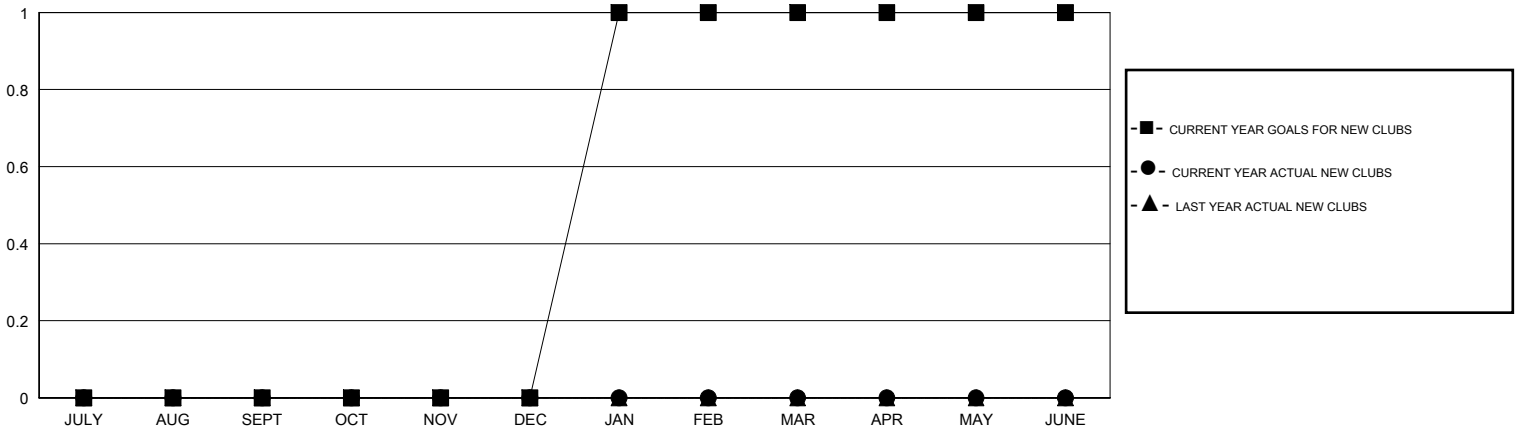
LOCATION MICHIGAN

GMT CA 1

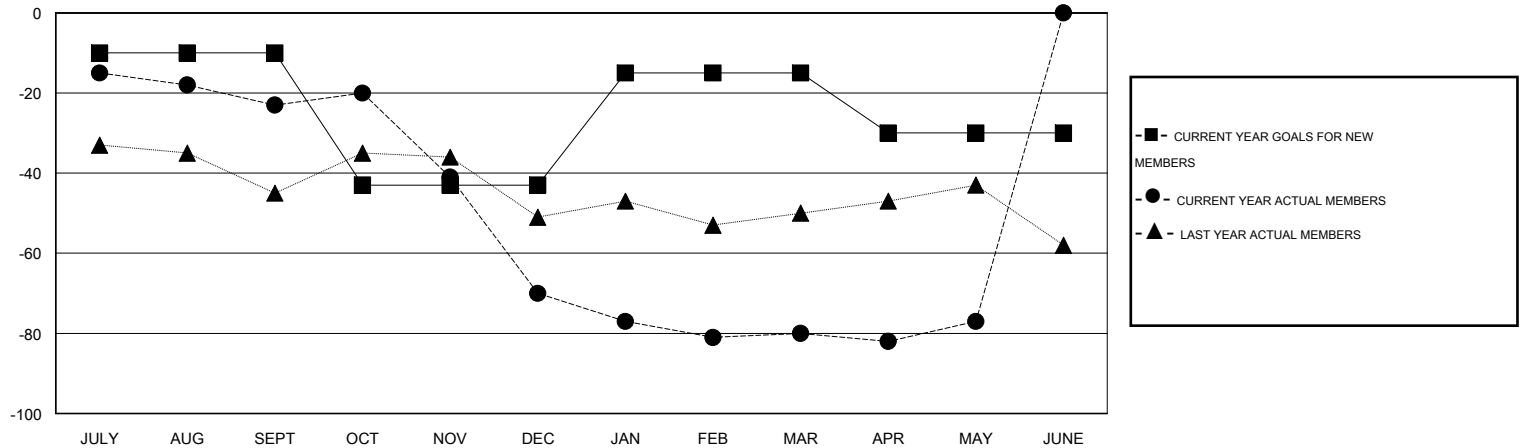
Clubs				
RESULTS FOR 2015-2016				
QUARTER	NEW CLUB GOAL	NEW CLUBS	DROPPED CLUBS	NET GAIN/LOSS
JULY/AUG/SEPT	0	0	0	0
OCT/NOV/DEC	0	0	2	-2
JAN/FEB/MAR	1	0	0	0
APR/MAY/JUNE	0	0	0	0

Members				
RESULTS FOR 2015-2016				
QUARTER	NEW MEMBER GOAL	CHARTER AND NEW MEMBERS ADDED	DROPPED MEMBERS	NET GAIN/LOSS
JULY/AUG/SEPT	-10	13	36	-23
OCT/NOV/DEC	-33	22	69	-47
JAN/FEB/MAR	28	17	27	-10
APR/MAY/JUNE	-15	24	21	3

GOALS AND ACTUAL NEW CLUBS CUMULATIVE



GOALS AND ACTUAL MEMBERS CUMULATIVE



DROPPED CLUBS: 2

25 CLUBS OF 45 ADDED 1 OR MORE NEW MEMBERS

GENDER DISTRIBUTION	
MALE	794 (70.20%)
FEMALE	337 (29.80%)

DROPPED MEMBERS	
DECEASED	23
CLUB CANCELLED	9
OTHER	121
TOTAL	153

[CLICK HERE FOR HEALTH ASSESSMENT DATA](#)

FAMILY UNIT MEMBERS	275
HEAD OF HOUSEHOLD	135
NON-HEAD OF HOUSEHOLD	140